

## Biotin Mouse IgM Isotype Control Antibody

<b>Catalog Number:</b>	302002
<b>Size:</b>	25 ug
<b>Target Name:</b>	Mouse IgM Isotype control
<b>Regulatory Status:</b>	RUO

### PRODUCT DETAILS

---

<b>Clone:</b>	MM-30
<b>Application:</b>	Flow Cytometry
<b>Reactivity:</b>	N/A
<b>Format:</b>	Biotin
<b>Isotype:</b>	Mouse IgM
<b>Antibody Type:</b>	Monoclonal
<b>Formulation:</b>	Phosphate-buffered solution, pH 7.2, containing 0.09% sodium azide
<b>Protein Concentration:</b>	0.2 mg/mL
<b>Storage&amp;Handling:</b>	Store the antibody undiluted at 2°C to 8°C.
<b>Recommended Usage:</b>	Use at concentrations comparable to those used for the target-specific antibody.
<b>RRID:</b>	AB_3739221

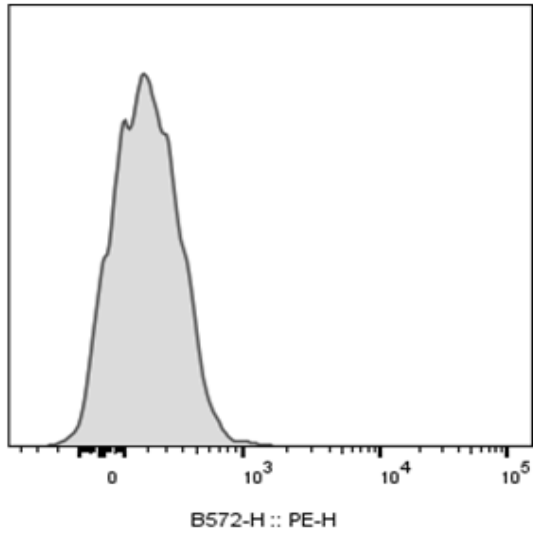
### BACKGROUND INFORMATION

---

The clone of MM-30 1 antibody is mouse isotype IgM, k. The MM-30 immunoglobulin has unknown specificity. It is chosen as an isotype control after screening on a variety of resting, activated, live, and fixed mouse, rat and human tissues.

PRODUCT DATA

---



Human granulocytes were stained with Biotin Mouse IgM isotype control clone MM-30 (gray histogram), followed by SA-PE.

This product is supplied subject to the terms and conditions at [www.innocyto.com/web/terms.php](http://www.innocyto.com/web/terms.php) and may only be used as provided in the stated terms. Products are for Research Use Only.