

## Technical Data Sheet

### FITC Anti-Mouse CD45.2

**Catalog Number:** 202305, 202306

**Size:** 25 tests, 100 tests

**Target Name:** CD45.2, Ly-5.2, LCA

**Regulatory Status:** RUO

#### Product Details

---

**Clone:** 104

**Application:** FC

**Reactivity:** Mouse

**Format:** FITC

**Isotype:** Mouse IgG2a

**Antibody Type:** Monoclonal

**Formulation:** Phosphate-buffered solution, pH 7.2, containing 0.09% sodium azide and 0.2% (w/v) BSA

**Protein Concentration:** Supplied at a lot-specific concentration.

**Storage&Handling:** The antibody solution should be stored undiluted between 2°C and 8°C, and protected from prolonged exposure to light. Do not freeze.

**Recommended Usage:** For flow cytometric staining, it is recommended to use 5 µL of this reagent per 0.5-1.0 million cells in a 100 µL volume. Optimal reagent performance should be determined by titration for each specific application.

**Release Date:** Nov-25

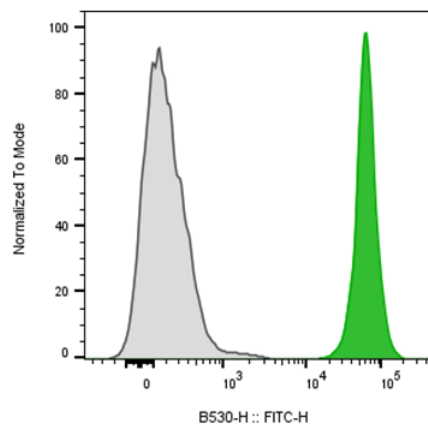
#### Background Information

---

CD45.2 is a mouse alloantigen variant of CD45, expressed by Ly5.2-bearing mouse strains (e.g., A, AKR, BALB/c, CBA/Ca, CBA/J, C3H/He, C57BL, C57BR, C57L, C58, DBA/1, DBA/2, NZB, SWR, 129). CD45 is a 180–240 kDa receptor-type protein tyrosine phosphatase (PTP) expressed on all hematopoietic cells except mature erythrocytes and platelets. CD45.2 plays a crucial role in immune cell signaling, lymphocyte development, and activation.

#### Product Data

---



Mouse splenocytes were stained either FITC Anti-Mouse CD45.2 clone104 (color-filled histogram) or an isotype control (gray histogram).