

Technical Data Sheet

iF647 Anti-His tag Antibody

Catalog Number: 300703, 300704

Size: 25 tests, 100 tests

Target Name: His Tag, histidine-tag

Regulatory Status: RUO

Product Details

Clone: 1005AB

Application: FC

Reactivity: His-tag, All Species Expected

Format: iF647

Isotype: Rabbit IgG

Antibody Type: Monoclonal

Formulation: Phosphate-buffered solution, pH 7.2, containing 0.09% sodium azide and 0.2% (w/v) BSA

Protein Concentration: Supplied at a lot-specific concentration.

Storage&Handling: The antibody solution should be stored undiluted between 2°C and 8°C, and protected from prolonged exposure to light. Do not freeze.

Recommended Usage: For flow cytometric staining, it is recommended to use 5 µL of this reagent per 0.5-1.0 million cells in a 100 µL volume. Optimal reagent performance should be determined by titration for each specific application.

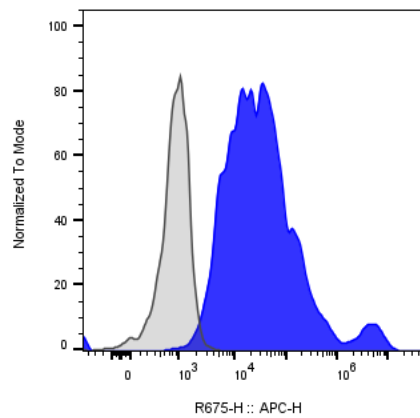
Excitation Laser: Red Laser (633 nm)

Release Date: Nov-25

Background Information

This antibody is raised against a synthetic 6xHis peptide. It can be used for Western blotting to detect His-tagged proteins (6xHis or more) at the N-terminus, C-terminus, or within the protein sequence. It is also suitable for flow cytometry or immunofluorescent staining of His-tagged proteins.

Product Data



Multi-tag (including His tag) transmembrane protein transfected CHO cells were stained either iF647 Anti-His antibody clone 1005AB (color-filled histogram) or an isotype control (gray histogram).