

Technical Data Sheet

PB Mouse IgG1 Isotype Control

Catalog Number: 301427, 301428

Size: 25 ug, 100 ug

Target Name: Mouse IgG1 Isotype Control

Regulatory Status: RUO

Product Details

Clone: MOPC-21

Application: FC

Reactivity: N/A

Format: PB

Isotype: Mouse IgG1

Antibody Type: Monoclonal

Formulation: Phosphate-buffered solution, pH 7.2, containing 0.09% sodium azide and 0.2% (w/v) BSA

Protein Concentration: 0.2mg/mL

Storage&Handling: The antibody solution should be stored undiluted between 2°C and 8°C, and protected from prolonged exposure to light. Do not freeze.

Recommended Usage: Use at concentrations comparable to those used for the target-specific antibody

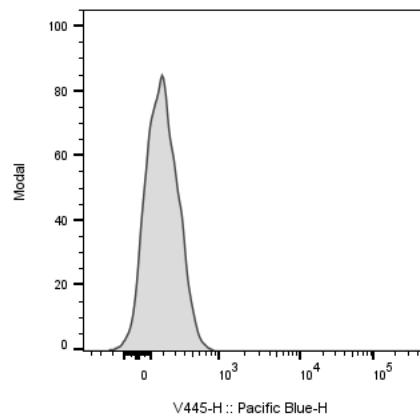
Excitation Laser: Violet laser (405nm)

Release Date: Nov-25

Background Information

The clone of MOPC-21 antibody is mouse isotype IgG1, k. The MOPC-21 immunoglobulin has unknown specificity. It is chosen as an isotype control after screening on a variety of resting, activated, live, and fixed mouse, rat and human tissues.

Product Data



Human PBMC were stained PB mouse IgG1 isotype control clone MOPC-21 (gray histogram).