

## Technical Data Sheet

### iF647 Anti-Human CD3

**Catalog Number:** 101607, 101608

**Size:** 25 tests, 100 tests

**Target Name:** CD3, T3, CD3?

**Regulatory Status:** RUO

#### Product Details

---

**Clone:** SK7

**Application:** FC

**Reactivity:** Human

**Format:** iF647

**Isotype:** Mouse IgG1

**Antibody Type:** Monoclonal

**Formulation:** Phosphate-buffered solution, pH 7.2, containing 0.09% sodium azide and 0.2% (w/v) BSA

**Protein Concentration:** Supplied at a lot-specific concentration.

**Storage&Handling:** The antibody solution should be stored undiluted between 2°C and 8°C, and protected from prolonged exposure to light. Do not freeze.

**Recommended Usage:** For flow cytometric staining, it is recommended to use 5 µL of this reagent per 0.5-1.0 million cells in a 100 µL volume. Optimal reagent performance should be determined by titration for each specific application.

**Excitation Laser:** Red Laser (633 nm)

**Release Date:** Dec-25

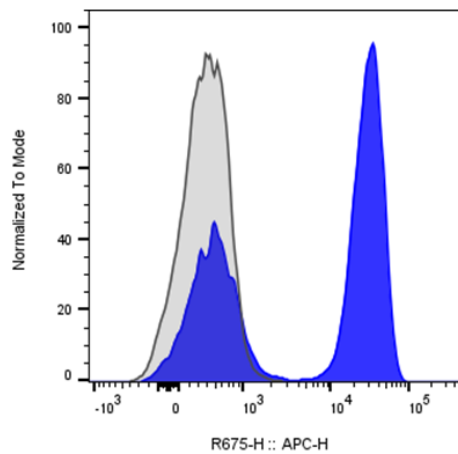
#### Background Information

---

CD3 (cluster of differentiation 3) is a protein complex and T cell co-receptor that is involved in activating both the cytotoxic T cell (CD8+ naive T cells) and T helper cells (CD4+ naive T cells). It is composed of four distinct chains. In mammals, the complex contains a CD3 $\epsilon$  chain, a CD3 $\delta$  chain, and two CD3 $\gamma$  chains. CD3 $\gamma$  chains are highly related cell-surface proteins of the immunoglobulin superfamily that plays a role in antigen recognition, signal transduction, and T cell activation.

#### Product Data

---



Human peripheral blood lymphocytes was stained with iF647 Anti-Human CD3 clone SK7 (color-filled histogram) or an isotype control (gray histogram).