

Technical Data Sheet

APC Anti-Human CD56

Catalog Number: 102411, 102412

Size: 25 tests, 100 tests

Target Name: CD56, Leu-19, NKH1

Regulatory Status: RUO

Product Details

Clone: 056EM1

Application: FC

Reactivity: Human

Format: APC

Isotype: Mouse IgG1

Antibody Type: Monoclonal

Formulation: Phosphate-buffered solution, pH 7.2, containing 0.09% sodium azide and 0.2% (w/v) BSA

Protein Concentration: Supplied at a lot-specific concentration.

Storage&Handling: The antibody solution should be stored undiluted between 2°C and 8°C, and protected from prolonged exposure to light. Do not freeze.

Recommended Usage: For flow cytometric staining, it is recommended to use 5 µL of this reagent per 0.5-1.0 million cells in a 100 µL volume. Optimal reagent performance should be determined by titration for each specific application.

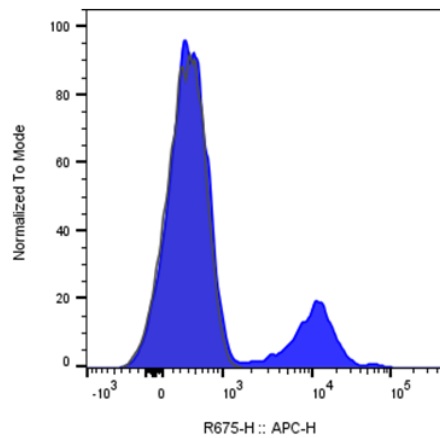
Excitation Laser: Red Laser (633 nm)

Release Date: Dec-25

Background Information

Neural cell adhesion molecule (NCAM), also called CD56. It is a member of the Ig superfamily. The 140 kD isoform is expressed on NK cells and NK-T cells. CD56 is also expressed in the brain (cerebellum and cortex) and at neuromuscular junctions. Certain large granular lymphocyte (LGL) leukemias, small-cell lung carcinomas, neuronal derived tumors, myelomas, and myeloid leukemias also express CD56. CD56 plays a role in homophilic and heterophilic adhesion via binding to itself or heparin sulfate.

Product Data



Human peripheral blood lymphocytes was stained with APC Anti-Human CD56 clone 056EM1 (color-filled) or an isotype control (gray histogram).