

## Technical Data Sheet

### APC Anti-Human CD127

**Catalog Number:** 104913, 104914

**Size:** 25 tests, 100 tests

**Target Name:** CD127, IL-7 receptor  $\gamma$  chain, IL-7R $\gamma$

**Regulatory Status:** RUO

#### Product Details

---

**Clone:** 127AM1

**Application:** FC

**Reactivity:** Human

**Format:** APC

**Isotype:** Mouse IgG1

**Antibody Type:** Monoclonal

**Formulation:** Phosphate-buffered solution, pH 7.2, containing 0.09% sodium azide and 0.2% (w/v) BSA

**Protein Concentration:** Supplied at a lot-specific concentration.

**Storage&Handling:** The antibody solution should be stored undiluted between 2°C and 8°C, and protected from prolonged exposure to light. Do not freeze.

**Recommended Usage:** For flow cytometric staining, it is recommended to use 5  $\mu$ L of this reagent per 0.5-1.0 million cells in a 100  $\mu$ L volume. Optimal reagent performance should be determined by titration for each specific application.

**Excitation Laser:** Red Laser (633 nm)

**Release Date:** Dec-25

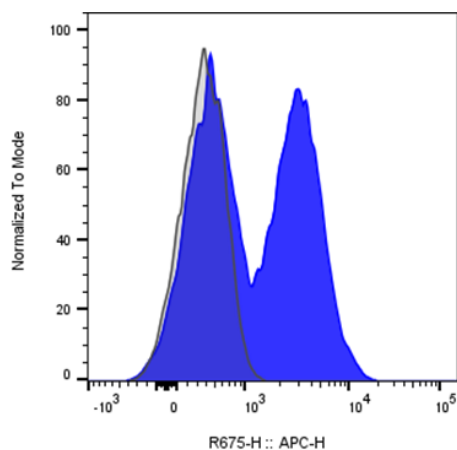
#### Background Information

---

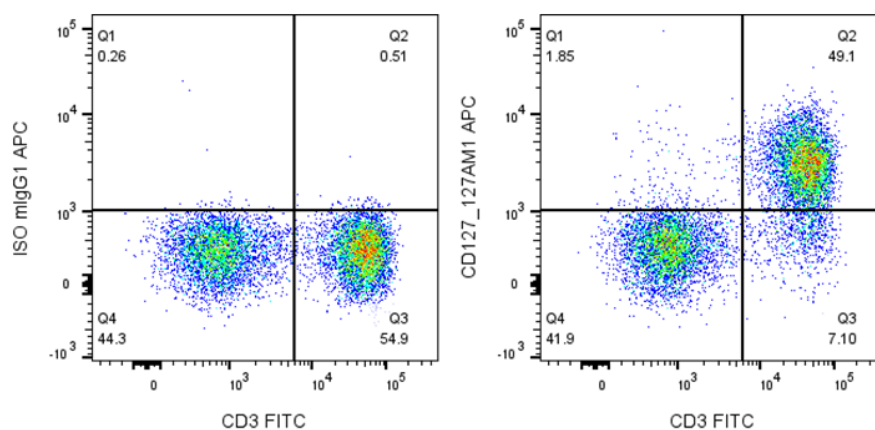
The interleukin-7 receptor is a protein found on the surface of cells. It is made up of two different smaller protein chains - i.e. it is a heterodimer, and consists of two subunits, interleukin-7 receptor- $\gamma$  (CD127) and common- $\gamma$  chain receptor (CD132). The common- $\gamma$  chain receptors is shared with various cytokines, including interleukin-2, -4, -9, and -15. Interleukin-7 receptor is expressed on various cell types, including naive and memory T cells and many others. Interleukin-7 receptor has been shown to play a critical role in the development of immune cells called lymphocytes.

#### Product Data

---



Human peripheral blood lymphocytes was stained with APC Anti-Human CD127 clone 127AM1 (color-filled) or an isotype control (gray histogram).



Human peripheral blood lymphocytes stained with FITC Anti-human CD3 and either APC Anti-Human CD127 clone 127AM1 (right panel) or an isotype control (left panel).