

## Technical Data Sheet

### iF488 Anti-Human TCRbV3.1(TRbV28)

**Catalog Number:** 107103, 107104

**Size:** 25 tests, 100 tests

**Target Name:** TCRbV3.1

**Regulatory Status:** RUO

#### Product Details

---

**Clone:** JOVI-3

**Application:** FC

**Reactivity:** Human

**Format:** iF488

**Isotype:** Mouse IgG2a

**Antibody Type:** Monoclonal

**Formulation:** Phosphate-buffered solution, pH 7.2, containing 0.09% sodium azide and 0.2% (w/v) BSA

**Protein Concentration:** Supplied at a lot-specific concentration.

**Storage&Handling:** The antibody solution should be stored undiluted between 2°C and 8°C, and protected from prolonged exposure to light. Do not freeze.

**Recommended Usage:** For flow cytometric staining, it is recommended to use 5 uL of this reagent per 0.5-1.0 million cells in a 100 µL volume. Optimal reagent performance should be determined by titration for each specific application.

**Excitation Laser:** Blue Laser (488 nm)

**Release Date:** Dec-25

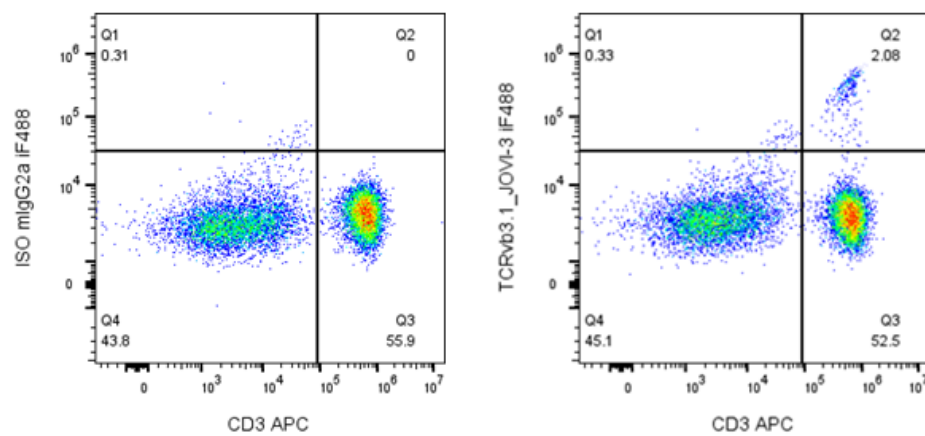
#### Background Information

---

The T-cell receptor (TCR) is a protein complex found on the surface of T cells, or T lymphocytes,[1] that is responsible for recognizing fragments of antigen as peptides bound to major histocompatibility complex (MHC) molecules. The binding between TCR and antigen peptides is of relatively low affinity and is degenerate: that is, many TCRs recognize the same antigen peptide and many antigen peptides are recognized by the same TCR.

#### Product Data

---



Human peripheral blood lymphocytes stained with APC Anti-human CD3 and either iF488 Anti-Human TCRbV3.1(TRbV28) clone JOVI-3 (right panel) or an isotype control (left panel).