

## Technical Data Sheet

### iF647 Anti-Human CD25

**Catalog Number:** 107505, 107506

**Size:** 25 tests, 100 tests

**Target Name:** IL-2 receptor  $\alpha$  chain, Low affinity IL-2R, IL-2R $\beta$  chain

**Regulatory Status:** RUO

#### Product Details

---

**Clone:** M-A251

**Application:** FC

**Reactivity:** Human

**Format:** iF647

**Isotype:** Mouse IgG1

**Antibody Type:** Monoclonal

**Formulation:** Phosphate-buffered solution, pH 7.2, containing 0.09% sodium azide and 0.2% (w/v) BSA

**Protein Concentration:** Supplied at a lot-specific concentration.

**Storage&Handling:** The antibody solution should be stored undiluted between 2°C and 8°C, and protected from prolonged exposure to light. Do not freeze.

**Recommended Usage:** For flow cytometric staining, it is recommended to use 5  $\mu$ L of this reagent per 0.5-1.0 million cells in a 100  $\mu$ L volume. Optimal reagent performance should be determined by titration for each specific application.

**Excitation Laser:** Red Laser (633 nm)

**Release Date:** Dec-25

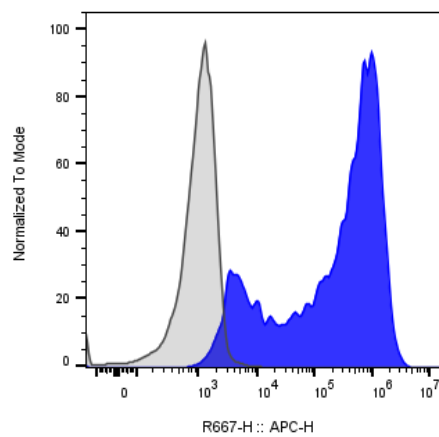
#### Background Information

---

The interleukin-2 receptor alpha chain (also called Tac antigen, P55, and mainly CD25) is a protein involved in the assembly of the high-affinity interleukin-2 receptor, consisting of alpha (IL2RA), beta (IL2RB) and the common gamma chain (IL2RG). As the name indicates, this receptor interacts with interleukin-2, a pleiotropic cytokine which plays an important role in immune homeostasis. It is expressed on progenitor lymphocytes, activated T and B cells, and activated monocytes/macrophages.

#### Product Data

---



Anti-human CD3 and Anti-Human CD28 stimulated human peripheral blood lymphocytes was stained with iF647 Anti-Human CD25 clone M-A251 (color-filled histogram) or an isotype control (gray histogram).