

## Technical Data Sheet

iF647 Anti-human Fc $\epsilon$ RI $\alpha$ ;

**Catalog Number:** 108105, 108106

**Size:** 25 tests, 100 tests

**Target Name:** Fc $\epsilon$ RI $\alpha$ , High affinity IgE receptor, Fc $\epsilon$ RI  $\alpha$

**Regulatory Status:** RUO

### Product Details

---

**Clone:** AER-37

**Application:** FC

**Reactivity:** Human

**Format:** iF647

**Isotype:** Mouse IgG2b

**Antibody Type:** Monoclonal

**Formulation:** Phosphate-buffered solution, pH 7.2, containing 0.09% sodium azide and 0.2% (w/v) BSA

**Protein Concentration:** Supplied at a lot-specific concentration.

**Storage&Handling:** The antibody solution should be stored undiluted between 2°C and 8°C, and protected from prolonged exposure to light. Do not freeze.

**Recommended Usage:** For flow cytometric staining, it is recommended to use 5  $\mu$ L of this reagent per 0.5-1.0 million cells in a 100  $\mu$ L volume. Optimal reagent performance should be determined by titration for each specific application.

**Excitation Laser:** Red Laser (633 nm)

**Release Date:** Dec-25

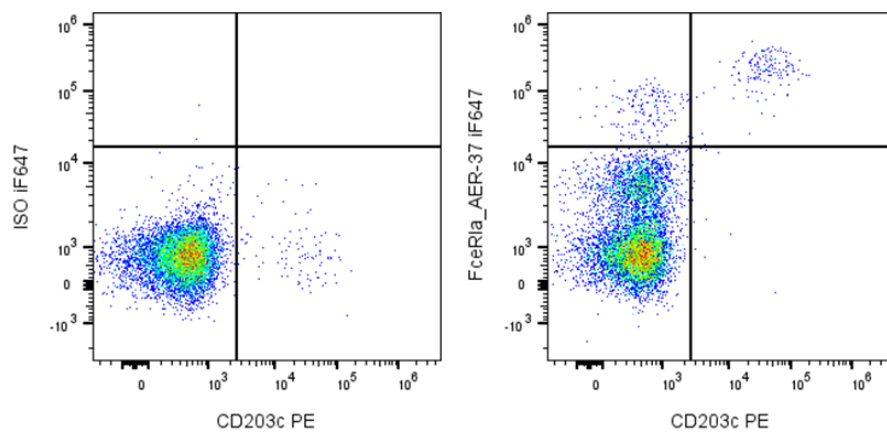
### Background Information

---

Human Fc $\epsilon$ RI $\alpha$ s have been identified based on differential enzymatic sensitivity. Clinically, CD34 is expressed in ~40% of acute myeloid leukemias and 65% of pre-B acute lymphoblastic leukemias, but only 1–5% of acute T-lymphoid leukemias. It is also used to assess stem cell counts for transplantation and can provide prognostic information in certain cancers.

### Product Data

---



Human peripheral blood lymphocytes stained with PE Anti-human CD203c and either iF647 Anti-Human FcERI? clone AER-37 (right panel) or an isotype control (left panel).