

Technical Data Sheet

APC Anti-human Fc ϵ RI α ;

Catalog Number: 108107, 108108

Size: 25 tests, 100 tests

Target Name: Fc ϵ RI α , High affinity IgE receptor, Fc ϵ RI α

Regulatory Status: RUO

Product Details

Clone: AER-37

Application: FC

Reactivity: Human

Format: APC

Isotype: Mouse IgG2b

Antibody Type: Monoclonal

Formulation: Phosphate-buffered solution, pH 7.2, containing 0.09% sodium azide and 0.2% (w/v) BSA

Protein Concentration: Supplied at a lot-specific concentration.

Storage&Handling: The antibody solution should be stored undiluted between 2°C and 8°C, and protected from prolonged exposure to light. Do not freeze.

Recommended Usage: For flow cytometric staining, it is recommended to use 5 μ L of this reagent per 0.5-1.0 million cells in a 100 μ L volume. Optimal reagent performance should be determined by titration for each specific application.

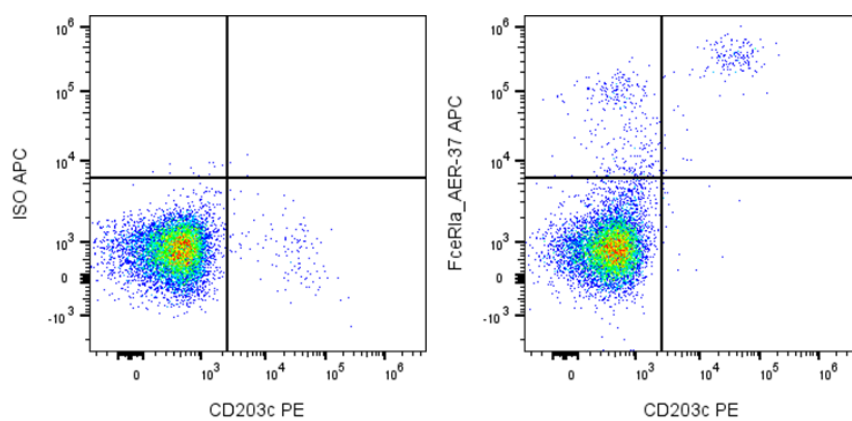
Excitation Laser: Red Laser (633 nm)

Release Date: Dec-25

Background Information

Human Fc ϵ RI α s have been identified based on differential enzymatic sensitivity. Clinically, CD34 is expressed in ~40% of acute myeloid leukemias and 65% of pre-B acute lymphoblastic leukemias, but only 1–5% of acute T-lymphoid leukemias. It is also used to assess stem cell counts for transplantation and can provide prognostic information in certain cancers.

Product Data



Human peripheral blood lymphocytes stained with PE Anti-human CD203c and either APC Anti-Human FcεR1? clone AER-37 (right panel) or an isotype control (left panel).