

Technical Data Sheet

Anti-Human CD56

Catalog Number: 111001, 111002

Size: 100 ug, 500 ug

Target Name: CD56, Leu-19, NKH1

Regulatory Status: RUO

Product Details

Clone: CD56H

Application: FC

Reactivity: Human

Format: Purified

Isotype: Mouse IgG1

Antibody Type: Monoclonal

Formulation: Phosphate-buffered solution, pH 7.2, containing 0.09% sodium azide

Protein Concentration: 0.5 mg/mL

Storage&Handling: The antibody solution should be stored between 2°C and 8°C

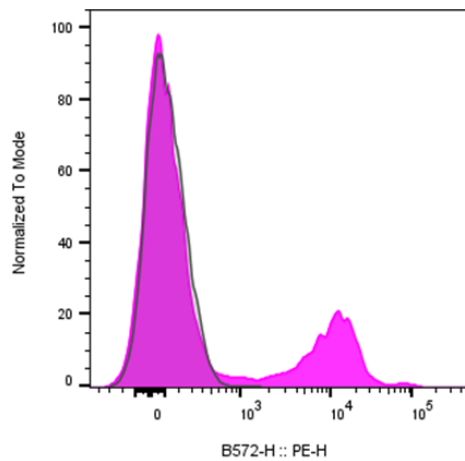
Recommended Usage: For flow cytometric staining, it is recommended to use less than 0.2 ug of this reagent per 0.5-1.0 million cells in a 100 µL volume. Optimal reagent performance should be determined by titration for each specific application.

Release Date: Dec-25

Background Information

Neural cell adhesion molecule (NCAM), also called CD56. It is a member of the Ig superfamily. The 140 kD isoform is expressed on NK cells and NK-T cells. CD56 is also expressed in the brain (cerebellum and cortex) and at neuromuscular junctions. Certain large granular lymphocyte (LGL) leukemias, small-cell lung carcinomas, neuronal derived tumors, myelomas, and myeloid leukemias also express CD56. CD56 plays a role in homophilic and heterophilic adhesion via binding to itself or heparin sulfate.

Product Data



Human peripheral blood lymphocytes pheral blood lymphocytes was stained with Purified Anti-Human CD56 clone HCD56 (color-filled histogram) or an isotype control (gray histogram), followed by PE anti-mouse IgG 2nd antibody.