

Technical Data Sheet

iF488 Anti-Mouse TCR α / β chain

Catalog Number: 201707, 201708

Size: 25 tests, 100 tests

Target Name: TCR α chain, TCR- β

Regulatory Status: RUO

Product Details

Clone: H57-597-R1

Application: FC

Reactivity: Mouse

Format: iF488

Isotype: Rat IgG1

Antibody Type: Monoclonal

Formulation: Phosphate-buffered solution, pH 7.2, containing 0.09% sodium azide and 0.2% (w/v) BSA

Protein Concentration: Supplied at a lot-specific concentration.

Storage&Handling: The antibody solution should be stored undiluted between 2°C and 8°C, and protected from prolonged exposure to light. Do not freeze.

Recommended Usage: For flow cytometric staining, it is recommended to use 5 μ L of this reagent per 0.5-1.0 million cells in a 100 μ L volume. Optimal reagent performance should be determined by titration for each specific application.

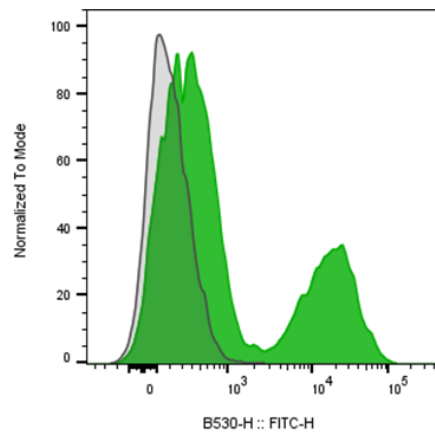
Excitation Laser: Blue Laser (488 nm)

Release Date: Dec-25

Background Information

The T cell receptor (TCR) is a heterodimeric molecule expressed on the surface of T lymphocytes, responsible for recognizing antigens presented by MHC molecules. In ~95% of T cells, the TCR consists of an α (alpha) and β (beta) chain ($\alpha\beta$ TCR), while in ~5% of T cells, it is composed of γ (gamma) and δ (delta) chains ($\gamma\delta$ TCR). TCR α is a member of the immunoglobulin superfamily and a component of the CD3/TCR complex, which includes CD3 subunits essential for signal transduction. This complex mediates antigen recognition, signal transduction, and subsequent T cell activation.

Product Data



Mouse splenocytes were stained with either iF488 Anti-Mouse TCR? clone H57-597-R1 (color-filled histogram) or an isotype control (gray histogram).