

Technical Data Sheet

PE Anti-Mouse CD49b (pan-NK)

Catalog Number: 202604, 202605
Size: 25 tests, 100 tests
Target Name: CD49b, Integrin alpha 2 chain, ITGA2
Regulatory Status: RUO

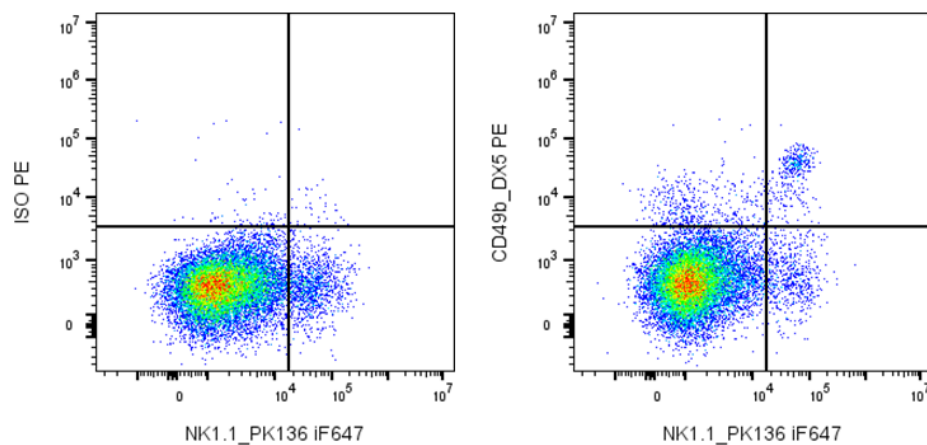
Product Details

Clone: DX5
Application: FC
Reactivity: Mouse
Format: PE
Isotype: Rat IgM
Antibody Type: Monoclonal
Formulation: Phosphate-buffered solution, pH 7.2, containing 0.09% sodium azide and 0.2% (w/v) BSA
Protein Concentration: Supplied at a lot-specific concentration.
Storage&Handling: The antibody solution should be stored undiluted between 2°C and 8°C, and protected from prolonged exposure to light. Do not freeze.
Recommended Usage: For flow cytometric staining, it is recommended to use 5 µL of this reagent per 0.5-1.0 million cells in a 100 µL volume. Optimal reagent performance should be determined by titration for each specific application.
Excitation Laser: Blue Laser (488 nm) Green/Yellow laser (532/561nm)
Release Date: Dec-25

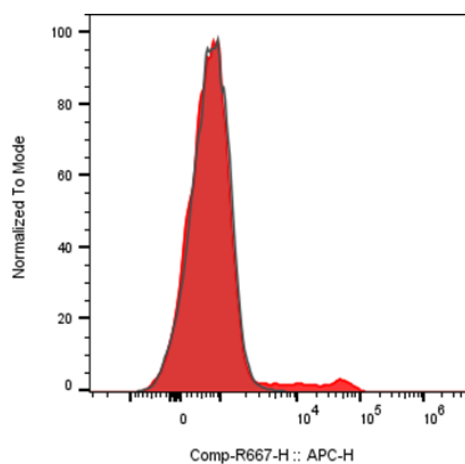
Background Information

CD49b is a 150 kD glycoprotein, also known as $\alpha 2$ integrin, VLA-2 α chain, Integrin $\alpha 2$ chain, and HM $\alpha 2$. It is a member of the integrin family, expressed on NK cells, a subset of splenic CD4⁺ T cells, NK-T cells, intestinal intraepithelial and lamina propria lymphocytes, epithelial cells, and platelets. By associating with CD29 (integrin $\beta 1$ subunit), CD49b forms the VLA-2 (integrin $\alpha 2\beta 1$) complex. It plays a critical role in both adhesion and lymphocyte activation. The primary ligands for CD49b are collagen, laminin, and fibronectin. The HM $\alpha 2$ antibody has been shown to be useful for partially blocking CD49b mediated interactions with collagen. Additionally, this antibody blocks staining of splenic NK cells by the monoclonal antibody DX5.

Product Data



Mouse splenocytes were stained with iF647 Anti-mouse NK1.1 clone PK136 and either PE Anti-Mouse CD49b clone DX5 (right panel) or an isotype control (left panel).



Mouse splenocytes were stained with PE Anti-Mouse CD49b clone DX5 (color-filled histogram) or an isotype control (gray histogram).