

iF560 Anti-Mouse CD11c (integrin α X) Antibody

Catalog Number:	203105, 203106
Size:	25 tests, 100 tests
Target Name:	CD11c, integrin α X chain, CR4, ITGAX, p150
Regulatory Status:	RUO

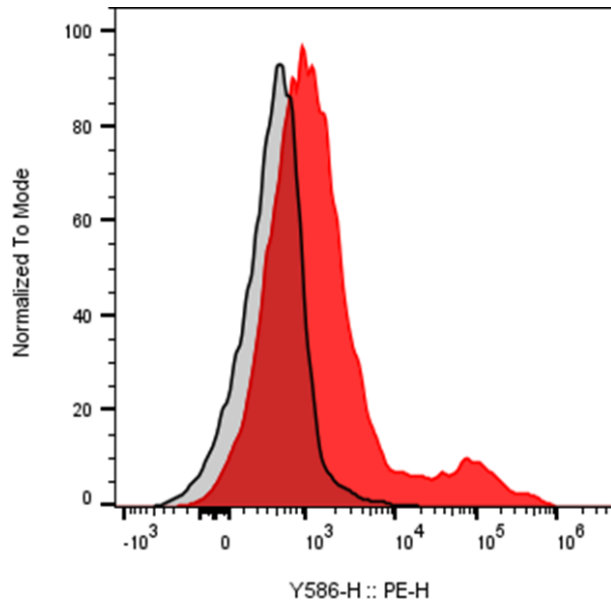
PRODUCT DETAILS

Clone:	N418-mG1
Application:	Flow Cytometry
Reactivity:	Mouse
Format:	iF560
Isotype:	Mouse IgG1
Antibody Type:	Monoclonal
Formulation:	Phosphate-buffered solution, pH 7.2, containing 0.09% sodium azide and 0.2% (w/v) BSA
Protein Concentration:	Supplied at a lot-specific concentration.
Storage&Handling:	The antibody solution should be stored undiluted between 2°C and 8°C, and protected from prolonged exposure to light. Do not freeze.
Recommended Usage:	For flow cytometric staining, it is recommended to use 5 μ L of this reagent per 0.5-1.0 million cells in a 100 μ L volume. Optimal reagent performance should be determined by titration for each specific application. iF560 has an excitation max at 560 nm and an emission max at 571 nm.
Excitation Laser:	Green/Yellow laser (532/561nm)
Isotype Control:	301412

BACKGROUND INFORMATION

CD11c (Integrin α X, CR4, p150) is a ~150 kDa type I transmembrane glycoprotein that pairs non-covalently with β 2 integrin (CD18) to form the α X β 2 heterodimer. It is expressed mainly on dendritic cells, with additional expression on NK cells, subsets of intestinal intraepithelial lymphocytes, monocytes/macrophages, granulocytes, and some activated T and B cells. CD11c/CD18 binds iC3b, fibrinogen, and CD54 (ICAM-1), mediating cell-cell adhesion, phagocytosis of opsonized particles, and immune cell trafficking.

PRODUCT DATA



Mouse splenocytes were stained with either iF560 Anti-mouse CD11c antibody clone N418-mG1 (color-filled histogram) or an isotype (gray histogram).

This product is supplied subject to the terms and conditions at www.innocyto.com/web/terms.php and may only be used as provided in the stated terms. Products are for Research Use Only.