

## HRP Donkey Anti-Goat IgG (F(ab')<sub>2</sub> Fragment)

<b>Catalog Number:</b>	306101
<b>Size:</b>	100 uL
<b>Target Name:</b>	Goat IgG
<b>Regulatory Status:</b>	RUO

### PRODUCT DETAILS

---

<b>Clone:</b>	Poly002 (F(ab'&#039;) <sub>2</sub> Fragment)
<b>Application:</b>	ELISA, WB, Sandwich ELISA
<b>Reactivity:</b>	Goat IgG
<b>Format:</b>	HRP
<b>Isotype:</b>	Donkey IgG
<b>Antibody Type:</b>	Polyclonal
<b>Formulation:</b>	Phosphate-buffered solution, pH 7.4, with stabilizer
<b>Protein Concentration:</b>	Supplied at a lot-specific concentration.
<b>Storage&amp;Handling:</b>	Store the antibody undiluted at 2°C to 8°C.
<b>Recommended Usage:</b>	For ELISA application, it can be used at 1:5,000 to 1:20,000 dilution. However, optimization by titration is suggested for best performance in each specific application.

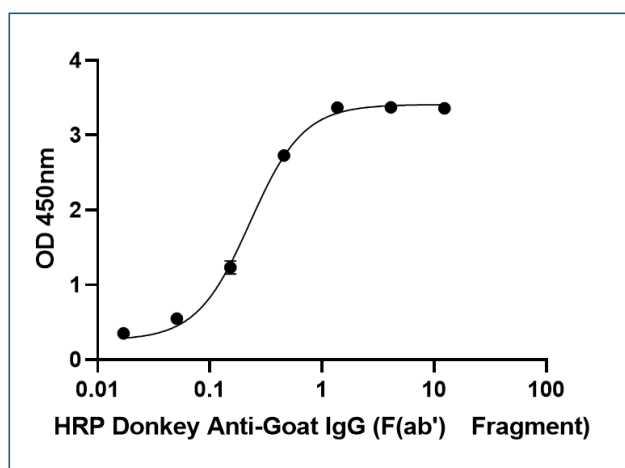
### BACKGROUND INFORMATION

---

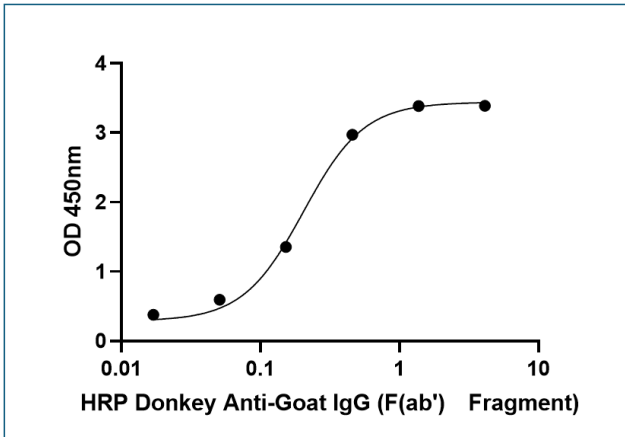
Minimum cross reactivity to chicken, guinea pig, syrian hamster, horse, human, mouse, rabbit and rat serum proteins

### PRODUCT DATA

---



Goat anti-rabbit polyclonal antibody is coated at 1000ng/mL (100ng/well). HRP Donkey Anti-Goat IgG (F(ab')<sub>2</sub> Fragment) can detect Goat anti-rabbit polyclonal antibody in the dose dependent manner. For ELISA application, this antibody can be used at 1:5000-1:20,000 dilution.



Goat anti-rabbit polyclonal antibody and Goat anti-mouse polyclonal antibody are coated at 1000ng/mL (100ng/well). HRP Donkey Anti-Goat IgG (F(ab')<sub>2</sub> Fragment) can detect Goat anti-rabbit polyclonal antibody in the dose dependent manner. For ELISA application, this antibody can be used at 1:5000-1:20,000 dilution.

This product is supplied subject to the terms and conditions at [www.innocyto.com/web/terms.php](http://www.innocyto.com/web/terms.php) and may only be used as provided in the stated terms. Products are for Research Use Only.