

Technical Data Sheet

FITC Anti-human CD3

Catalog Number: 109013, 109014

Size: 25 tests, 100 tests

Target Name: CD3, T3, CD3?

Regulatory Status: RUO

Product Details

Clone: UCHT1

Application: FC

Reactivity: Human

Format: FITC

Isotype: Mouse IgG1

Antibody Type: Monoclonal

Formulation: Phosphate-buffered solution, pH 7.2, containing 0.09% sodium azide and 0.2% (w/v) BSA

Protein Concentration: Supplied at a lot-specific concentration.

Storage&Handling: The antibody solution should be stored undiluted between 2°C and 8°C, and protected from prolonged exposure to light. Do not freeze.

Recommended Usage: For flow cytometric staining, it is recommended to use 5 µL of this reagent per 0.5-1.0 million cells in a 100 µL volume. Optimal reagent performance should be determined by titration for each specific application.

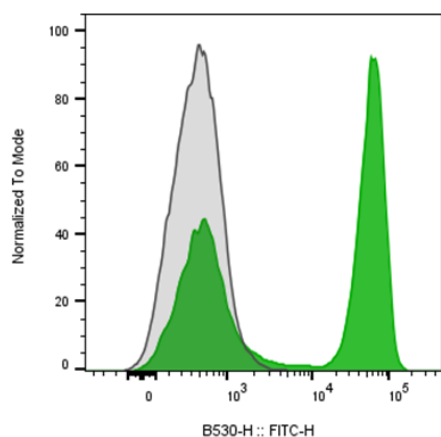
Excitation Laser: Blue Laser (488 nm)

Release Date: Aug-25

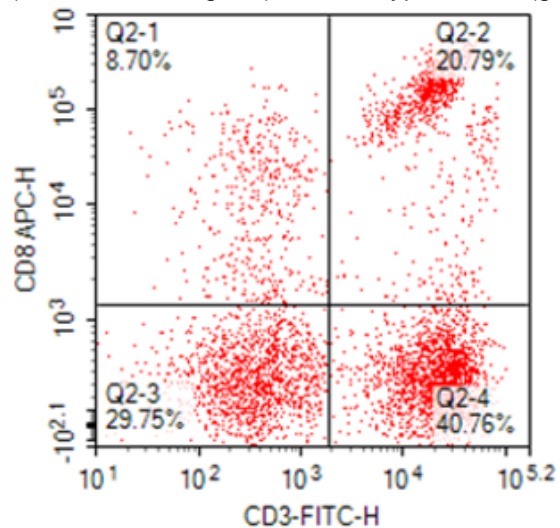
Background Information

CD3 (cluster of differentiation 3) is a protein complex and T cell co-receptor that is involved in activating both the cytotoxic T cell (CD8+ naive T cells) and T helper cells (CD4+ naive T cells). It is composed of four distinct chains. In mammals, the complex contains a CD3 ϵ chain, a CD3 δ chain, and two CD3 γ chains. CD3 γ chains are highly related cell-surface proteins of the immunoglobulin superfamily that plays a role in antigen recognition, signal transduction, and T cell activation.

Product Data



Human peripheral blood lymphocytes was stained with FITC Anti-Human CD3 clone UCHT1 (color-filled histogram) or an isotype control (gray histogram).



Human peripheral blood lymphocytes stained with UCHT1 FITC and APC anti-human CD8 clone SK1