

Human Fc blocking reagent

Catalog Number:	700601, 700602
Size:	100 Tests, 500 Tests
Target Name:	Fc Blocker, FcγR blocker, Fc inhibitor
Regulatory Status:	RUO

PRODUCT DETAILS

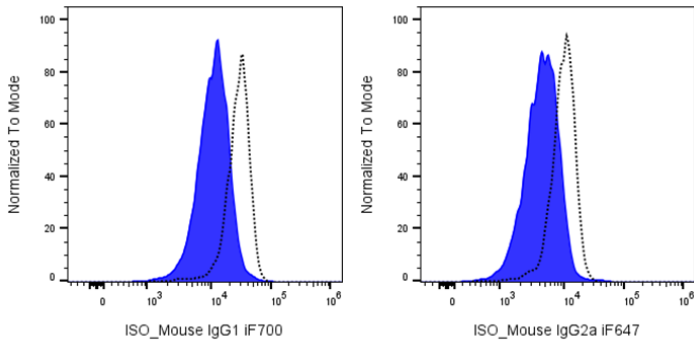
Clone:	N/A
Application:	Flow Cytometry
Reactivity:	Human
Format:	Purified
Isotype:	Human IgG
Antibody Type:	Recombinant
Formulation:	Phosphate-buffered solution, pH 7.2, containing 0.09% sodium azide
Protein Concentration:	1.0 mg/mL
Storage&Handling:	The antibody solution should be stored between 2°C and 8°C
Recommended Usage:	For flow cytometric analysis, block Fc receptors by pre-incubating cells with a human Fc blocker for 5–10 minutes on ice at 2.5 μL per 10 ⁶ cells in a volume of 100 μL prior to immunostaining. Washing between the blocking step and primary antibody staining is not required.

BACKGROUND INFORMATION

Human Fc receptors (FcRs) are cell surface proteins that bind the Fc region of antibodies and mediate key immune functions such as phagocytosis, antibody-dependent cellular cytotoxicity, and cytokine release. They are widely expressed on immune cells, including monocytes, macrophages, dendritic cells, neutrophils, NK cells, and B cells.

In flow cytometry, Fc receptors can bind staining antibodies non-specifically through their Fc regions, leading to increased background and potential false-positive signals. To minimize this, Fc receptor blocking reagents are typically used prior to staining. This step is especially important when working with myeloid populations or other Fc receptor-rich cells, as it improves staining specificity and overall data accuracy.

PRODUCT DATA



Human peripheral blood monocytes were incubated with Innocyto Human Fc blocking reagent (2.5 uL/1e6 cells; color-filled histogram) and then stained with iF700 (left) or iF647 (right) Mouse IgG1 isotype control. Untreated cells are shown as the dotted-line histogram.

This product is supplied subject to the terms and conditions at www.innocyto.com/web/terms.php and may only be used as provided in the stated terms. Products are for Research Use Only.