

## Technical Data Sheet

### Anti-c-Myc Antibody

**Catalog Number:** 300801, 300802  
**Size:** 50 ug, 200 ug  
**Target Name:** Myc tag, Myc epitope  
**Regulatory Status:** RUO

#### Product Details

---

**Clone:** 9E10  
**Application:** ELISA, WB, FC  
**Reactivity:** Myc tag, All Species Expected  
**Format:** Purified  
**Isotype:** Mouse IgG1  
**Antibody Type:** Monoclonal  
**Formulation:** Phosphate-buffered solution, pH 7.2, containing 0.09% sodium azide  
**Protein Concentration:** 0.5 mg/mL  
**Storage and Handling:** Quick spin the vial after receiving. The antibody solution should be stored between 2°C and 8°C without dilution.  
**Recommended Usage:** For ELISA application, this antibody can be used at 0.05 ug/mL or lower as the detection antibody. For flow cytometric staining, it is recommended to use less than 0.25 ug of this reagent per 0.5-1.0 million cells in a 100 µL volume. Optimal reagent performance should be determined by titration for each specific application.

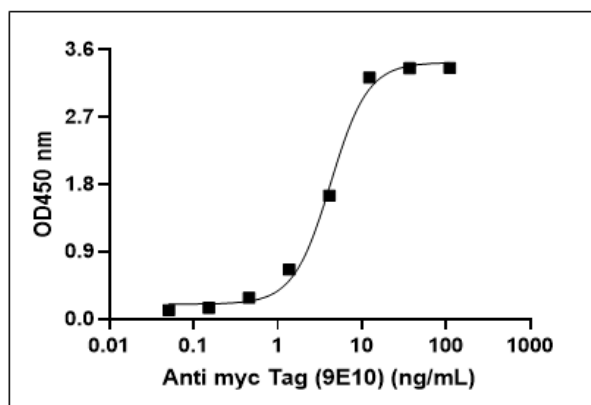
#### Background Information

---

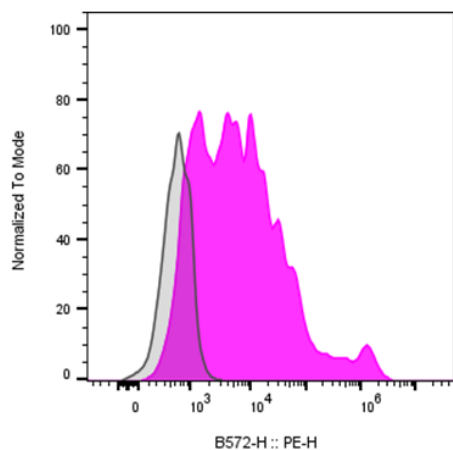
The 9E10 monoclonal antibody was generated by immunizing mice with a synthetic peptide corresponding to amino acids 408–438 (E E Q K L I S E E D L L R K R R E Q L K H K L E Q L R N S C A) of the human c-Myc protein. It specifically recognizes the epitope EQKLISEEDL, a defined sequence within the human c-Myc protein

#### Product Data

---



Multi-tag protein (catalog 603901) is coated at 100ng/mL (10ng\_well). Anti-c-Myc antibody (clone 9E10) can detect the Multi-tag protein in the dose dependent manner. For ELISA application, this antibody can be used at 0.05 ug/mL or lower as the detection antibody.



Multi-tag (including Myc tag) transmembrane protein transfected CHO cells were stained either purified Anti-Myc antibody clone 9E10 (color-filled histogram) or an isotype control (gray histogram), followed by PE anti-mouse IgG secondary antibody.