

FITC Rat IgG2a Isotype Control Antibody

Catalog Number:	300204
Size:	50 ug
Target Name:	Rat IgG2a Isotype control
Regulatory Status:	RUO

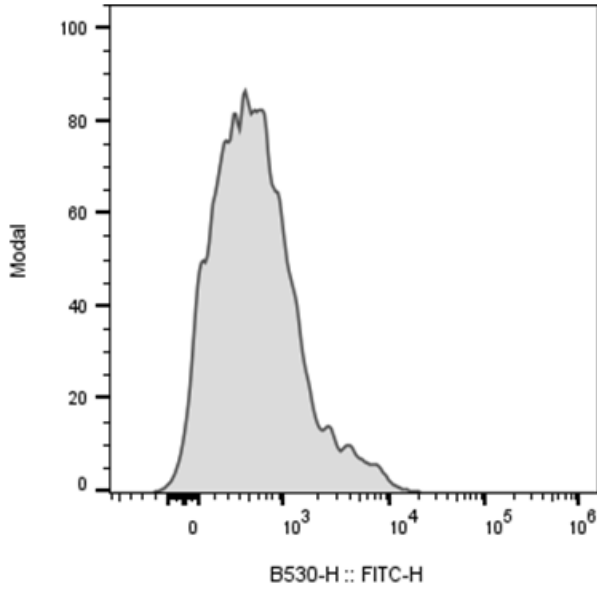
PRODUCT DETAILS

Clone:	RTK2758
Application:	Flow Cytometry
Reactivity:	N/A
Format:	FITC
Isotype:	Rat IgG2a
Antibody Type:	Monoclonal
Formulation:	Phosphate-buffered solution, pH 7.2, containing 0.09% sodium azide and 0.2% (w/v) BSA
Protein Concentration:	0.2mg/mL
Storage and Handling:	Store the antibody undiluted at 2°C to 8°C.
Recommended Usage:	Use at concentrations comparable to those used for the target-specific antibody. FITC has an excitation max at 493 nm and an emission max at 525 nm.
Excitation Laser:	Blue Laser (488 nm)
RRID:	AB_3739123

BACKGROUND INFORMATION

The RTK2758 immunoglobulin reacts with KLH. The isotype of this antibody is rat IgG2a, κ . This antibody was chosen as an isotype control after screening on a variety of resting, activated, live, and fixed mouse, rat and human tissues.

PRODUCT DATA



Mouse splenocytes stained with FITC Rat IgG2a Isotype Control clone RTK2758 (gray histogram)

This product is supplied subject to the terms and conditions at www.innocyto.com/web/terms.php and may only be used as provided in the stated terms. Products are for Research Use Only.