

PE Rat IgG2b Isotype Control Antibody

Catalog Number:	300305
Size:	50 ug
Target Name:	Rat IgG2b Isotype control
Regulatory Status:	RUO

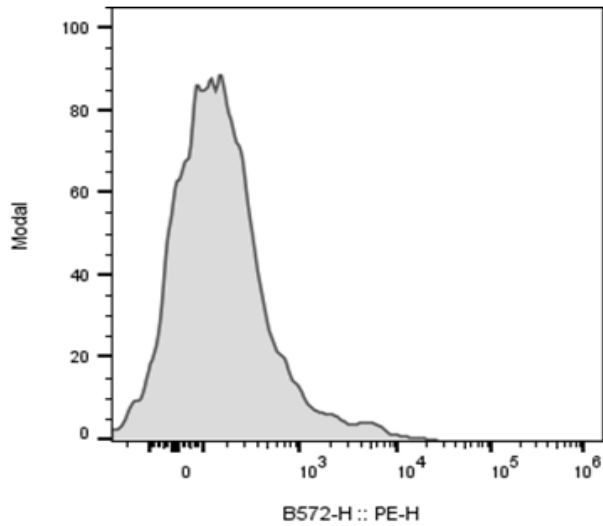
PRODUCT DETAILS

Clone:	RTK4530
Application:	Flow Cytometry
Reactivity:	N/A
Format:	PE
Isotype:	Rat IgG2b
Antibody Type:	Monoclonal
Formulation:	Phosphate-buffered solution, pH 7.2, containing 0.09% sodium azide and 0.2% (w/v) BSA
Protein Concentration:	Supplied at a lot-specific concentration.
Storage and Handling:	The antibody solution should be stored undiluted between 2°C and 8°C, and protected from prolonged exposure to light. Do not freeze.
Recommended Usage:	Use at concentrations comparable to those used for the target-specific antibody. PE has an excitation max at 565 nm and an emission max at 575 nm.
Excitation Laser:	Blue Laser (488 nm) Green/Yellow laser (532/561nm)
RRID:	AB_3739132

BACKGROUND INFORMATION

The RTK4530 immunoglobulin reacts with KLH. The isotype of this antibody is rat IgG2b, κ . This antibody was chosen as an isotype control after screening on a variety of resting, activated, live, and fixed mouse, rat and human tissues.

PRODUCT DATA



Mouse splenocytes stained with PE Rat IgG2b Isotype Control clone RTK4530 (gray histogram)

This product is supplied subject to the terms and conditions at www.innocyto.com/web/terms.php and may only be used as provided in the stated terms. Products are for Research Use Only.