

Biotin Human IgG1 Isotype Control Antibody

| | |
|---------------------------|----------------------------|
| Catalog Number: | 301211, 301212 |
| Size: | 25 ug, 100 ug |
| Target Name: | Human IgG1 isotype control |
| Regulatory Status: | RUO |

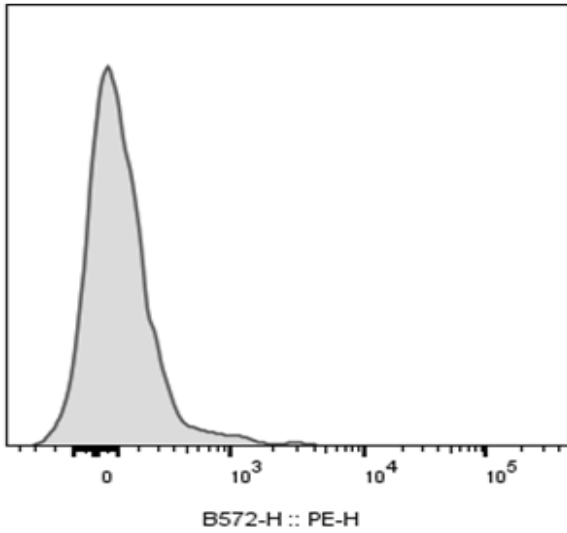
PRODUCT DETAILS

| | |
|-------------------------------|--|
| Clone: | 1016AH1 |
| Application: | Flow Cytometry |
| Reactivity: | N/A |
| Format: | Biotin |
| Isotype: | Human IgG1 |
| Antibody Type: | Monoclonal |
| Formulation: | Phosphate-buffered solution, pH 7.2, containing 0.09% sodium azide and 0.2% (w/v) BSA |
| Protein Concentration: | 0.2 mg/mL |
| Storage and Handling: | The antibody solution should be stored undiluted between 2°C and 8°C, and protected from prolonged exposure to light. Do not freeze. |
| Recommended Usage: | Use at concentrations comparable to those used for the target-specific antibody. For detection, use a secondary reagent with this product. |

BACKGROUND INFORMATION

There are four IgG subclasses (IgG1, 2, 3, and 4) in humans, named in order of their abundance in serum (IgG1 being the most abundant). The measurement of immunoglobulin G can be a diagnostic tool for certain conditions.

PRODUCT DATA



Human peripheral blood lymphocytes stained with biotinylated human IgG 1 isotype control clone 1016AH1, followed by SA-PE.

This product is supplied subject to the terms and conditions at www.innocyto.com/web/terms.php and may only be used as provided in the stated terms. Products are for Research Use Only.