

Biotin Human IgG4 Isotype Control Antibody

Catalog Number:	301311, 301312
Size:	25 ug, 100 ug
Target Name:	Human IgG4 isotype control
Regulatory Status:	RUO

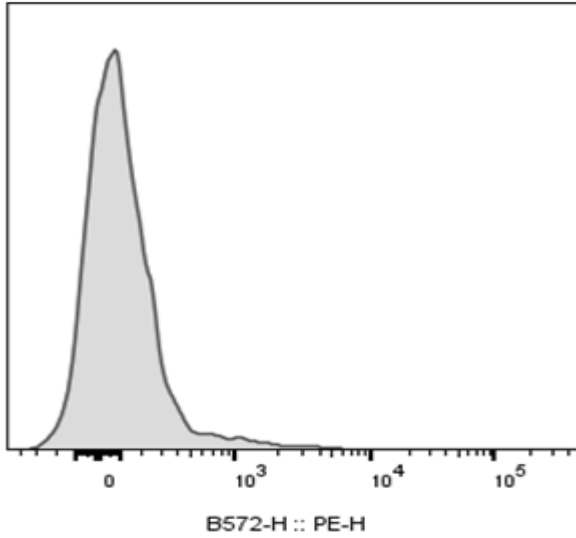
PRODUCT DETAILS

Clone:	1016AH4
Application:	Flow Cytometry
Reactivity:	N/A
Format:	Biotin
Isotype:	Human IgG4
Antibody Type:	Monoclonal
Formulation:	Phosphate-buffered solution, pH 7.2, containing 0.09% sodium azide and 0.2% (w/v) BSA
Protein Concentration:	0.2 mg/mL
Storage and Handling:	The antibody solution should be stored undiluted between 2°C and 8°C, and protected from prolonged exposure to light. Do not freeze.
Recommended Usage:	Use at concentrations comparable to those used for the target-specific antibody. For detection, use a secondary reagent with this product.
RRID:	AB_3739171

BACKGROUND INFORMATION

There are four IgG subclasses (IgG1, 2, 3, and 4) in humans, named in order of their abundance in serum (IgG1 being the most abundant). The measurement of immunoglobulin G can be a diagnostic tool for certain conditions.

PRODUCT DATA



Human peripheral blood lymphocytes stained with Biotin Human IgG4 isotype control clone 1016AH4, followed by SA-PE .

This product is supplied subject to the terms and conditions at www.innocyto.com/web/terms.php and may only be used as provided in the stated terms. Products are for Research Use Only.