

Biotin Mouse IgG2a Isotype Control Antibody

Catalog Number:	301507, 301508
Size:	25 ug, 100 ug
Target Name:	Mouse IgG2a Isotype Control
Regulatory Status:	RUO

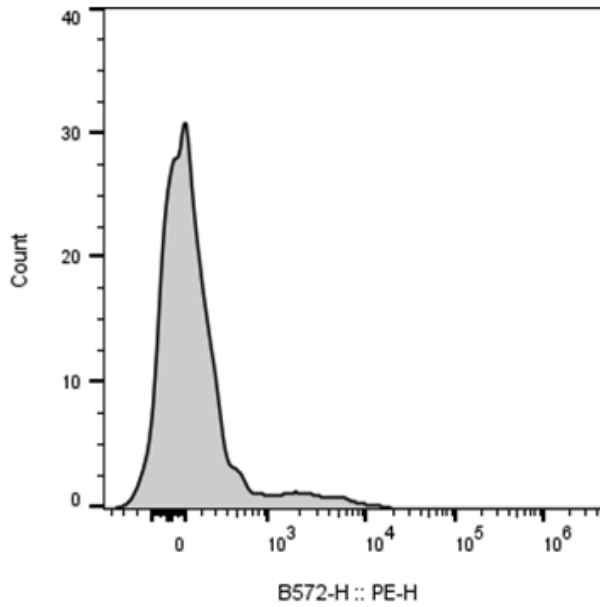
PRODUCT DETAILS

Clone:	MOPC-173
Application:	Flow Cytometry
Reactivity:	N/A
Format:	Biotin
Isotype:	Mouse IgG2a
Antibody Type:	Monoclonal
Formulation:	Phosphate-buffered solution, pH 7.2, containing 0.09% sodium azide and 0.2% (w/v) BSA
Protein Concentration:	0.2 mg/mL
Storage and Handling:	Store the antibody undiluted at 2°C to 8°C.
Recommended Usage:	Use at concentrations comparable to those used for the target-specific antibody. For detection, use a secondary reagent with this product.
RRID:	AB_3739193

BACKGROUND INFORMATION

The clone of MOPC-173 antibody is mouse isotype IgG2a, k. The MOPC-21 immunoglobulin has unknown specificity. It is chosen as an isotype control after screening on a variety of resting, activated, live, and fixed mouse, rat and human tissues.

PRODUCT DATA



Mouse splenocytes stained with Biotin Mouse IgG2a Isotype Control clone MOPC-173 (gray histogram) followed by SA-PE.

This product is supplied subject to the terms and conditions at www.innocyto.com/web/terms.php and may only be used as provided in the stated terms. Products are for Research Use Only.