

Mouse IgG2a Isotype Control Antibody

Catalog Number:	302601, 302602
Size:	100 ug, 500ug
Target Name:	Mouse IgG2a Isotype Control
Regulatory Status:	RUO

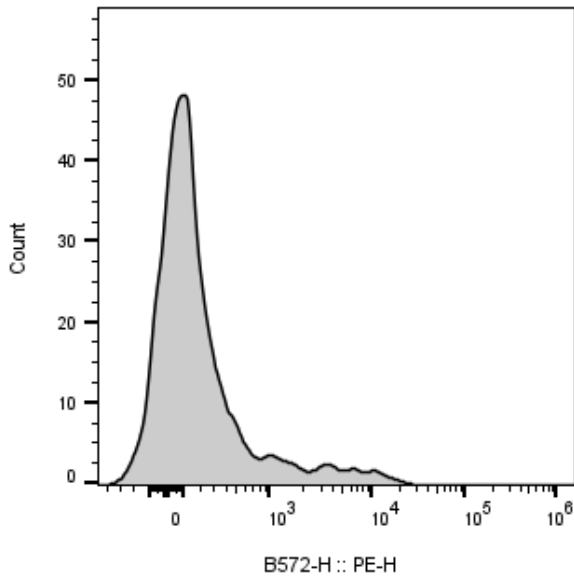
PRODUCT DETAILS

Clone:	MOPC-21-2a
Application:	Flow Cytometry
Reactivity:	N/A
Format:	Purified
Isotype:	Mouse IgG2a
Antibody Type:	Monoclonal
Formulation:	Phosphate-buffered solution, pH 7.2, containing 0.09% sodium azide
Protein Concentration:	0.5 mg/mL
Storage and Handling:	Store the antibody undiluted at 2°C to 8°C.
Recommended Usage:	Use at concentrations comparable to those used for the target-specific antibody.
RRID:	AB_3739226

BACKGROUND INFORMATION

This antibody is a clone of the MOPC-21 variable region with a Mouse IgG2a, kappa isotype. MOPC-21 immunoglobulin has an unknown antigen specificity and is commonly used as an isotype control. It was selected based on screening across a variety of resting and activated cells, as well as live and fixed tissues from mouse, rat, and human sources.

PRODUCT DATA



Mouse splenocytes stained with purified Mouse IgG2a Isotype Control clone MOPC-21-2a (gray histogram), followed by PE anti-mouse 2nd antibody.

This product is supplied subject to the terms and conditions at www.innocyto.com/web/terms.php and may only be used as provided in the stated terms. Products are for Research Use Only.